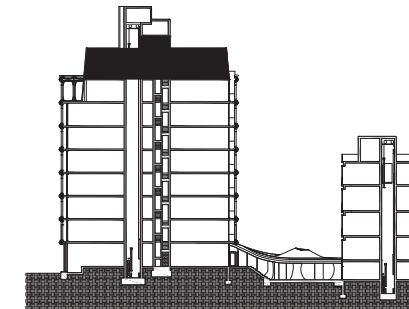
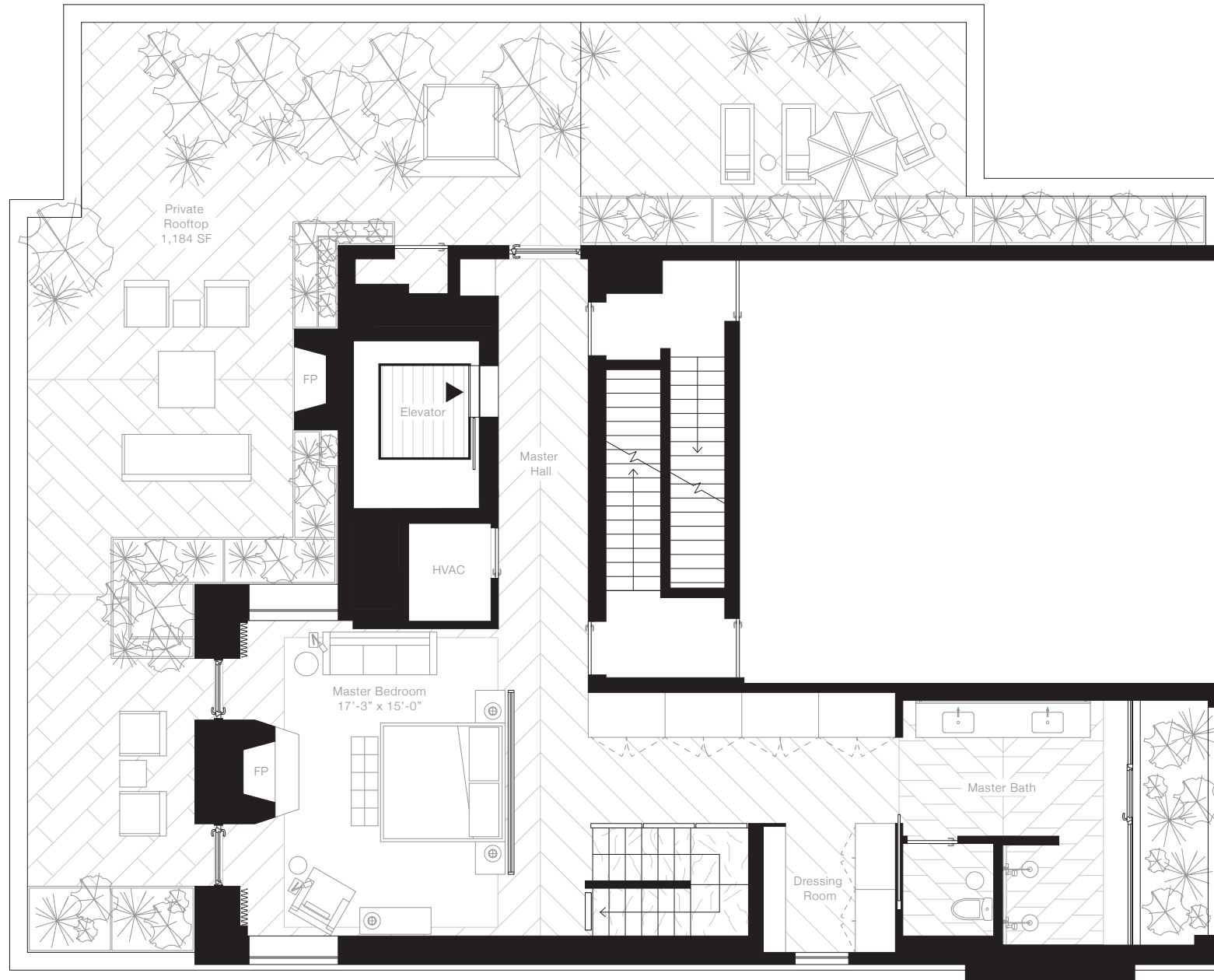


RESIDENCE FEATURES

- Layout and interior design by Dufner Heighes
- Direct elevator entry
- 12"-wide white oak flooring with matte oil finish
- Custom-designed white oak paneling and doors
- Decorative lighting by Roll and Hill, Louis Poulsen, and Allied Maker
- Full-height Kenya Black marble gas fireplace with soapstone interior in the Living Room
- Wall-to-wall Midnight Fossil limestone fireplace with volcanic stone interior and 7" linear gas burner in the Great Room
- Lutron HomeWorks lighting and shade control
- Sonance audiophile-quality speakers
- Hydronic radiant under-floor heat throughout
- Zoned, high-efficiency Daikin climate control for comfort cooling and heating
- Central vacuum system with powered tool set

TERRACES

- Absolute Black granite outdoor gas fireplace with soapstone interior
- Lynx 30" professional grill
- Continuous perimeter LED lighting
- Custom powder-coated aluminum planter boxes and cabinetry
- Absolute Black granite window and door surrounds
- Canadian black slate tile wall cladding
- Green roof plantings
- Custom 12" x 48" concrete pavers

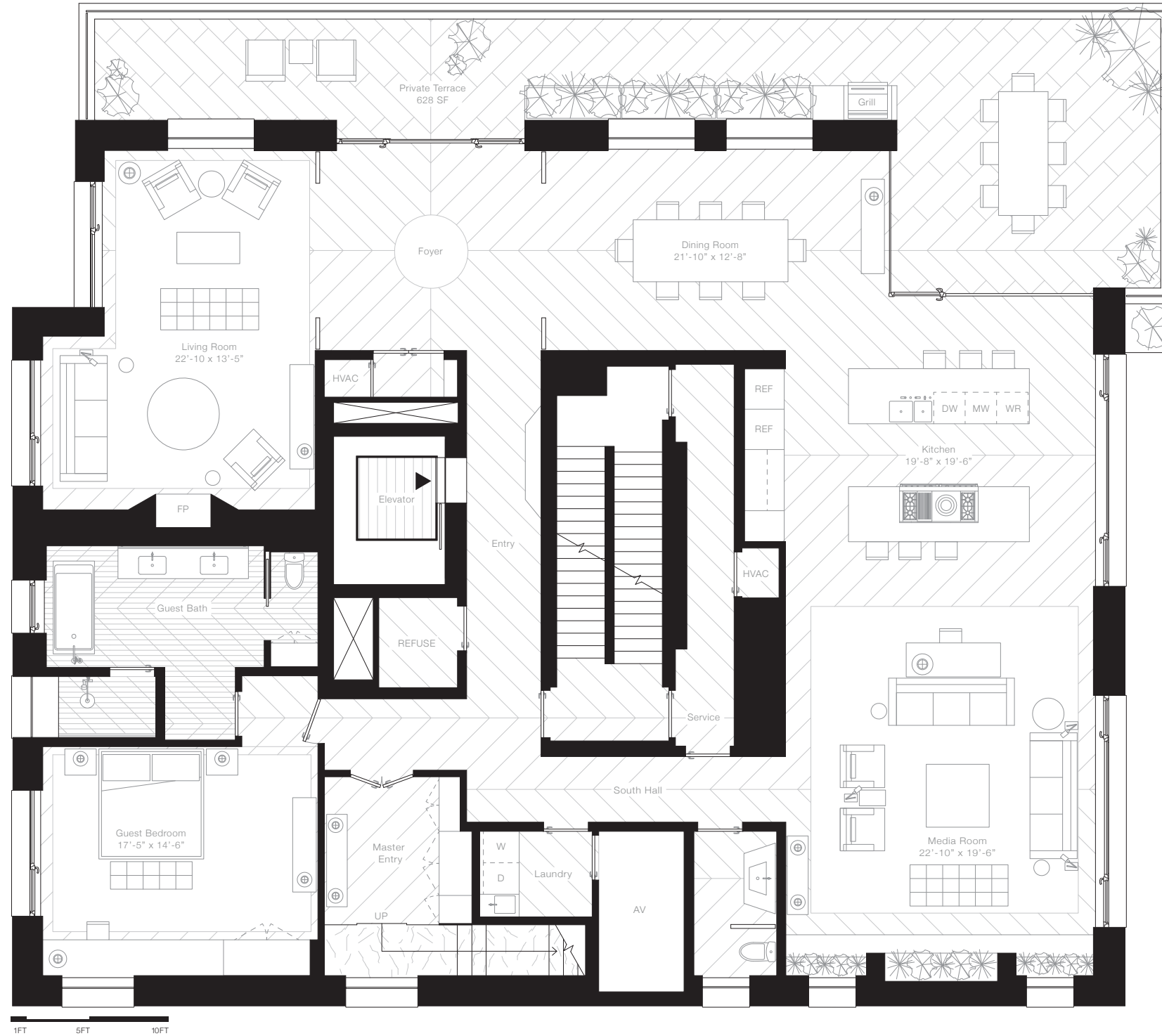


MASTER BATHROOM

- Custom water-jet cut Gasogne Blue limestone tile floor
- Custom-designed wall-hung rift-cut white oak vanity with Thassos marble countertops
- Gasogne Blue limestone slab double shower with linear drain, Dornbracht BigRain two-zone rain panel, and Vola fixtures
- Exterior moss garden
- Toto dual-flush toilet and bidet

MASTER BEDROOM

- Full-height Midnight Fossil limestone fireplace with soapstone interior
- Custom rift-cut white oak paneling, doors, and closet cabinetry
- Full-height Calacatta Extra marble wall
- Sub-Zero beverage center with icemaker



GUEST BATH

- Custom water-jet cut tile of Walnut Brown marble, Gascoigne Blue limestone, and Thassos marble floor
- Walnut Brown slab marble shower and linear drain
- Custom-designed rift-cut white oak double vanity with Thassos marble countertops
- Blu Bathworks free-standing tub with Vola fixtures
- Toto dual-flush toilet and bidet

KITCHEN

- Custom-designed white oak cabinetry
- Calacatta Extra marble countertops
- Custom faceted mirror-polished stainless steel range hood
- Sub-Zero refrigerator, freezer, and 24" wine cooler
- Miele dishwasher
- 60" Wolf range
- Stainless steel undermount sink with Dornbracht faucet and Insinkerator disposal

LAUNDRY ROOM

- Stainless steel undermount sink with Dornbracht faucet
- Asko Pro Series washer and vented dryer

POWDER ROOM

- Custom wall-hung Midnight Fossil limestone vanity
- Custom limestone sink with Vola fixtures
- Toto dual-flush toilet and bidet

This is not an offering. The complete terms are in an offering plan available from Sponsor, DDG / WH 325 West Broadway LLC, 60 Hudson Street, 18th Floor, New York, NY 10013. File No. CD14-0382. Floor plan dimensions are approximate and subject to normal construction variances and tolerances. Sponsor reserves the right to make changes in accordance with the terms of the Offering Plan. Plans and dimensions may contain minor variations from floor to floor. Equal Housing Opportunity.